

Penetrating neck trauma: A review of image-based evaluation and management

Scott D. Steenburg, MD, and Danny Leatherwood, MD

Perhaps nowhere else in the human body is there a collection of vital structures packed into such a small space than in the neck. This anatomic consideration is a key factor contributing to the overall mortality of penetrating injuries to the neck, which ranges from 2-10%.¹⁻⁶ Added to this anatomic complexity is the fact that patients may have clinically silent or unsuspected injuries that require intervention.⁶⁻¹⁰ Historically, a low threshold for surgical exploration was employed, owing to the fear of missing a clinically occult vascular or aerodigestive injury,^{7,8} all the while acknowledging that approximately 50-60% of these explorations would be nontherapeutic.^{1-3,11,12}

Management algorithms based on neck zonal anatomy (Table 1) and wound depth were developed in the 1970's.^{7-9,13-18} Using this approach, patients with wounds to zone II of the neck underwent mandatory exploration,

Dr. Steenburg and Dr. Leatherwood are radiologists in the Department of Radiology and Imaging Sciences, Division of Emergency Radiology, Indiana University School of Medicine, Indianapolis, IN.

Zone	Inferior Border	Superior Border
I	Clavicles and sternal notch	Cricoid cartilage
II	Cricoid cartilage	Mandibular angle
III	Mandibular angle	Skull base

regardless of patient vital signs and additional physical findings. Due to the difficult surgical exposure, zone I and zone III injuries were managed with a battery of invasive and semi-invasive tests, including catheter angiography, endoscopy, laryngoscopy and esophagography, all of which have focused utility and are tailored to evaluating specific anatomy.^{11,19-22} These tests require additional time and expertise, which may not always be available at all centers. A more comprehensive test to limit evaluation time and optimize resources was therefore desirable.

CT angiography (CTA) has emerged as a quick, reliable and accurate tool for evaluating these patients,^{1,5-7,10,23-27} the modality is highly accurate in diagnosing and excluding injuries requiring intervention, and it has been shown to significantly decrease nontherapeutic surgical neck explorations.^{1,4,6,7,10,13,16-}

^{18,24-28} Indeed, the shift away from management dictated by wound location and depth to a “no zone,” image-based approach has been driven primarily by CTA.^{5,6,10,17,23,24,29} A recent prospective multicenter trial evaluating 40- and 64-slice MDCT for cervical vascular and aerodigestive injuries has confirmed its accuracy and utility in patients with “soft signs” in the setting of penetrating neck injuries (Table 2).¹⁰

This review focuses on image-based evaluation and management as dictated by neck CTA. Strategies, pearls and pitfalls will be emphasized using an anatomical approach.

Image-based management

Patient clinical presentation and symptoms still hold an important place in the management of penetrating neck injuries (PNI).^{2,9,10,13,20,23,24,29,30-33} Patients with signs of significant neck

Table 2. Hard and Soft Signs of Major Neck Injuries

	Hard Signs	Soft Signs
Vascular	Expanding or pulsatile hematoma Active bleeding Shock New bruit/thrill Pulselessness	Hypotension Nonpulsatile hematoma
Aerodigestive	Airway compromise Subcutaneous emphysema Hematemesis Hemoptysis Stridor/hoarseness	Dyspnea Dysphonia
CNS/Spine	Neurologic deficit Signs of stroke	Neurologic deficit

Table 3. Diagnostic Performance of CT Angiography for Penetrating Neck Injuries

Reference	Scanner Type	Sensitivity (%)	Specificity (%)	Notes
Munera 2000 (Ref 4)	Single slice	90	100	Arterial injuries only
Munera 2002 (Ref 17)	Single slice	100	99	Arterial injuries only
Inaba 2006 (Ref 25)	4 row MDCT	100	99	Arterial injuries only
Inaba 2012 (Ref 10)	40 or 64 row MDCT	100	97.5	Vascular and aerodigestive injuries

injury, particularly those with “hard” signs of vascular and/or aerodigestive injuries, require immediate surgical exploration (Figure 1).^{2, 6, 9, 10, 13, 20, 23, 24, 30-33} CTA evaluation should, therefore, be reserved for patients without indications for immediate surgery and those with “soft” signs of neck injury (Table 2).^{6,10,29}

CT angiography has been shown to be highly accurate in diagnosing a myriad of penetrating neck injuries; thus, it has become the evaluation workhorse for patients with such injuries.^{1,4, 6, 7-9, 10,13,16-18, 24, 26-28} Much of the research on CTA in this setting has been focused on vascular injuries, as stroke is the dreaded consequence of cervical vascular injuries. CT angiography, even using older technology, performs well for the diagnosis of cervical vascular injuries, with sensitivities and specificities routinely exceeding 90%.^{5,7,10,16,17,25} Further technological advances have shown incremental improvements in performance (Table 3).

Cervical vascular injuries

Arterial injuries are seen in approximately 10-25% of patients with penetrating neck injuries, with the carotid

arteries involved approximately twice as often as the vertebral arteries.^{10, 18, 20, 23} Stroke can be seen in up to 15% of patients, with carotid artery injuries resulting in death in 22%.^{8, 18, 34, 35} These are, therefore, common and clinically significant injuries that require rapid diagnosis and triage to definitive therapy by experienced practitioners.

Much like arterial injuries elsewhere in the body, penetrating cervical vascular injuries may manifest as occlusion (partial or complete, Figures 2-4, 8), pseudoaneurysm (Figure 2), focal intimal injury (Figures 5,6), dissection, active bleeding (Figures 7, 8), and arteriovenous fistula (Figure 9). No further imaging evaluation is required when these pathologies are identified on CTA, and the patient can be triaged to definitive therapy.

Although most CT protocols for evaluating PNI focus on optimizing peak arterial enhancement, venous opacification can be present and may be used to diagnose venous injuries (Figure 10). Venous injuries following penetrating neck trauma are seen in 16-18% of patients^{19, 25, 36} and have historically been the most

frequently missed such injuries on physical exam.³⁶ Coupled with the overall decreasing prevalence of surgically diagnosed venous injuries due to increasing imaging utilization, this suggests that these injuries are of doubtful clinical significance. Nonetheless, venous injuries identified on CTA should be described and reported.

Aerodigestive tract injuries

Esophageal and tracheolaryngeal injuries following PNI are relatively uncommon, with esophageal trauma seen in 0.9-6.6% of patients^{10,13, 37-40} and tracheolaryngeal injuries seen in 1-7%.^{10, 38, 41, 42} This is fortunate, as direct CT findings may be absent, with the only imaging finding manifested as cervical emphysema, which could be introduced through the penetrating wound tract.

Physical exam findings in esophageal injuries are often nonspecific and cannot be used to reliably diagnose or exclude these injuries. Delayed diagnosis is a significant contributor to increased morbidity in patients with these injuries, as mediastinitis and sepsis may result. In some series, esophageal injuries are

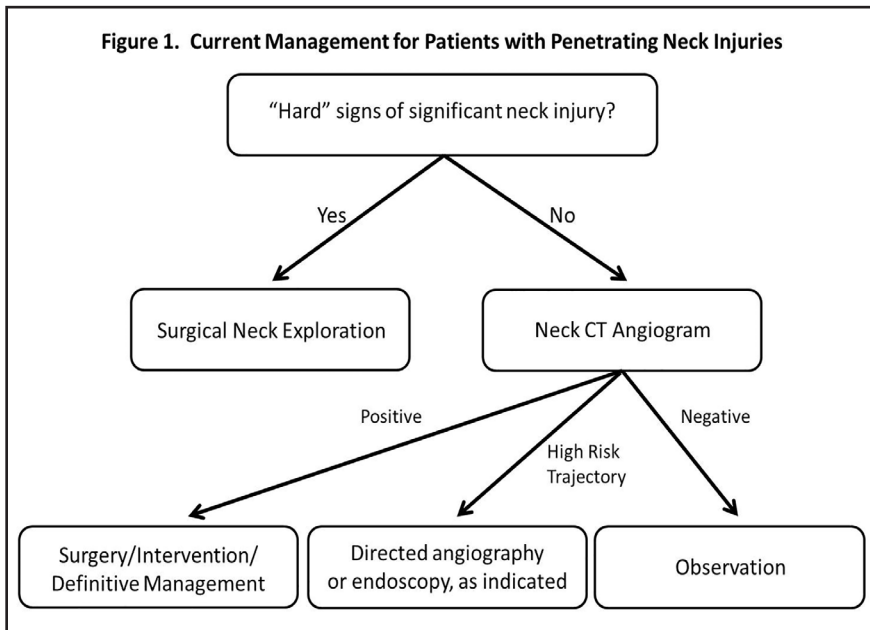


FIGURE 1. Current management for patients with penetrating neck injuries.

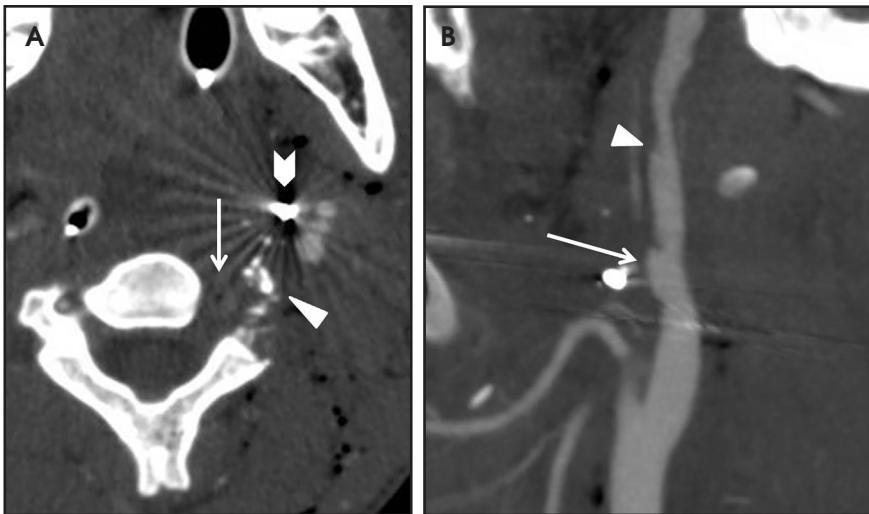


FIGURE 2. A 15-year-old boy status post-left zone III neck gunshot wound. Axial CTA image (A) demonstrates left vertebral artery occlusion (arrow) with adjacent bone fragments (triangle) from transverse process and articular facet fractures. Bullet fragments (arrow head) are located just medial to the carotid bifurcation. Sagittal CTA image (B) better demonstrates a complex ICA injury manifested by a pseudoaneurysm (arrow), long segment narrowing of varying diameter and an intimal flap (triangle).

associated with a mortality approaching 20%^{13, 20, 40, 43, 44} and may result in death in up to 12.5% of patients despite prompt diagnosis and repair.⁴⁰ Thus, a high suspicion for esophageal injury should be maintained in all patients whose penetrating wound tract approaches or passes near the esophagus⁴⁵ (Figure 11). If esophageal injury is suspected on CT angiography, endoscopy

and esophagography are indicated, as their combined sensitivity is ~90-100%.⁹

Injuries to the trachea and larynx are important to recognize because of their potential to cause life-threatening airway compromise (Figure 12).^{9, 46} Focal defects or discontinuity of the tracheo-laryngeal wall are direct signs of injury and can be used to triage the patient's

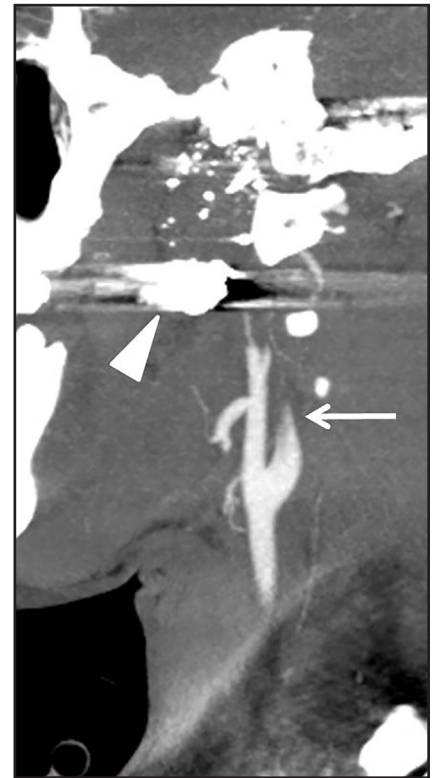


FIGURE 3. A 23-year-old man status post-zone III neck gunshot wound. Sagittal MIP demonstrates an internal carotid artery injury manifested by abrupt narrowing (arrow) below the injured segment. There are multiple adjacent bullet fragments (triangles).

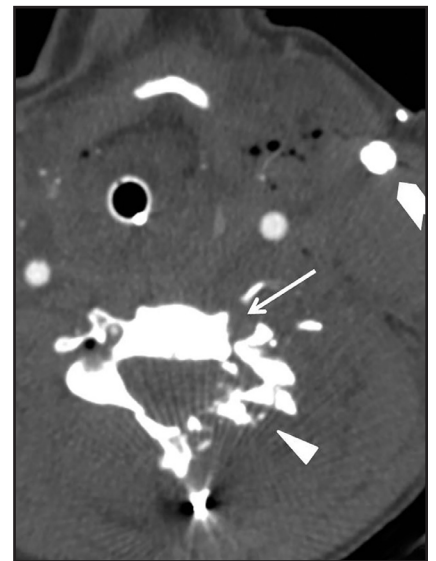


FIGURE 4. A 44-year-old man, neck CT angiography following immediate neck exploration. There are multiple bone fragments (triangle) and an occluded vertebral artery (arrow). A surgical drain is in place (arrow head).

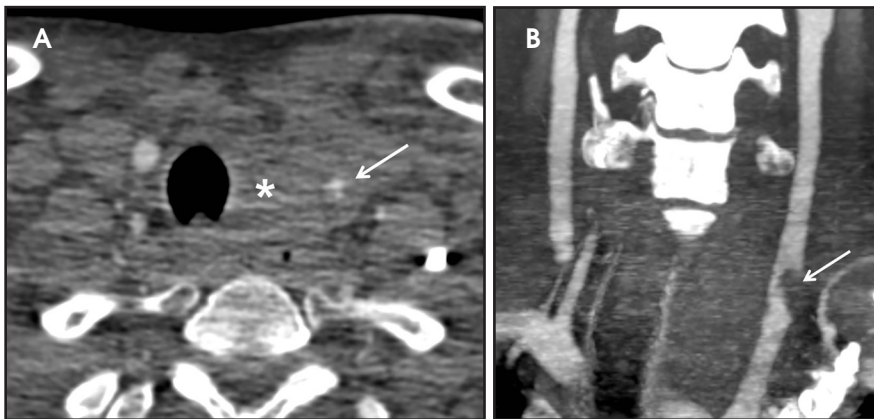


FIGURE 5. Stab wound to left zone I. Axial neck CTA image (A) reveals common carotid artery intimal irregularity (arrow), which on coronal MIP (B) is an intimal injury and adherent thrombus (arrow) resulting in luminary narrowing. There is adjacent hematoma (*) causing contralateral shift of the trachea.

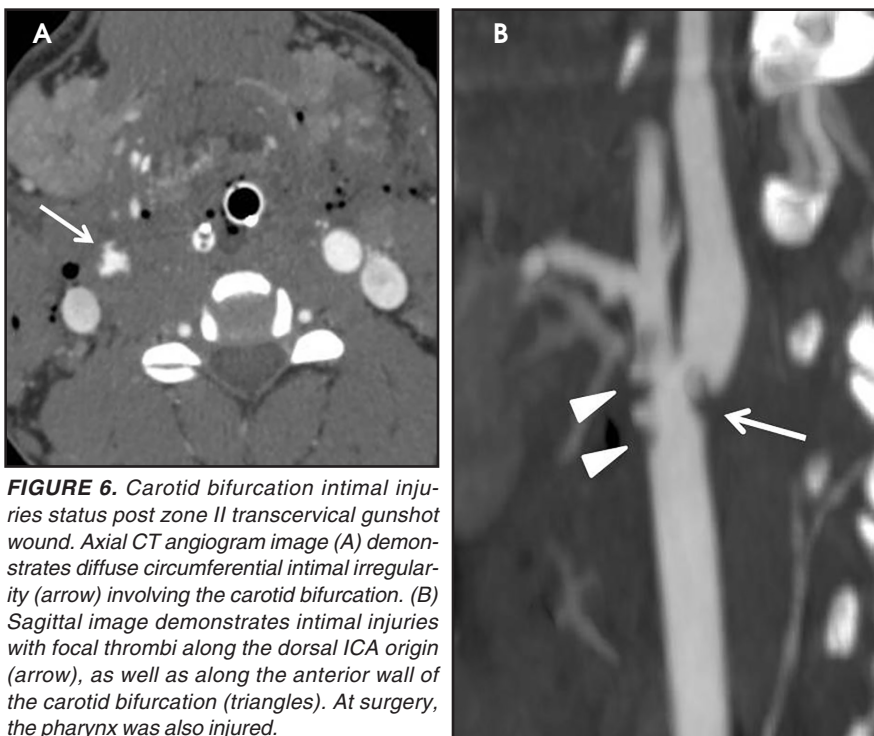


FIGURE 6. Carotid bifurcation intimal injuries status post zone II transcervical gunshot wound. Axial CT angiogram image (A) demonstrates diffuse circumferential intimal irregularity (arrow) involving the carotid bifurcation. (B) Sagittal image demonstrates intimal injuries with focal thrombi along the dorsal ICA origin (arrow), as well as along the anterior wall of the carotid bifurcation (triangles). At surgery, the pharynx was also injured.

Cervical spine and spinal cord injuries

Spinal injuries following PNI are seen in approximately 11-14% of patients.⁴⁸⁻⁵¹ Injuries to the cervical spine itself are easily diagnosed with CT. Fractures, including the level of injury and distribution of bone fragments,

should be reported in addition to the distribution of foreign bodies.⁵²

Cervical spinal cord injuries are rarely seen directly on neck CT angiography. Instead, the radiologist should rely on the wound trajectory to infer the presence of such an injury.^{5,51} (Figures 2, 4, 8). Patients with metallic foreign bodies are not candidates for MRI; efforts should be made to infer the presence of a cord injury on CT and recommend correlation with physical exam findings and neurological deficit.

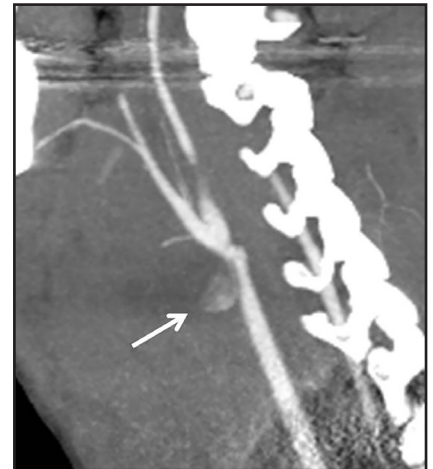


FIGURE 7. A 30-year-old man with a pulsatile neck hematoma status post-right zone II stab wound. Sagittal MIP image reveals a focus of active bleeding (arrow) arising from the anterior wall of the distal common carotid artery.

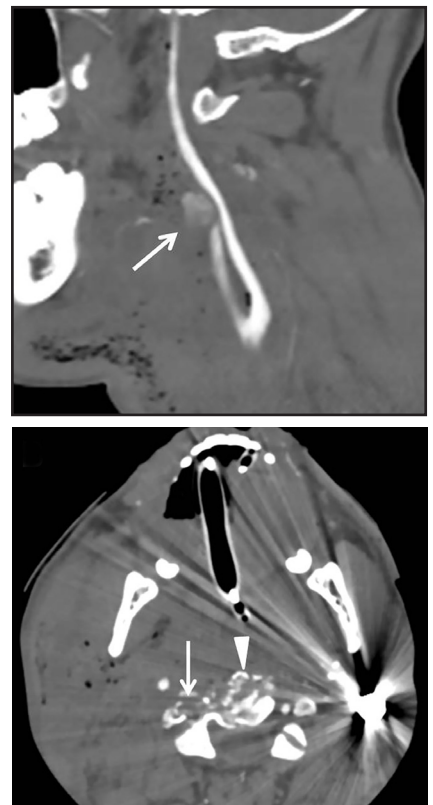


FIGURE 8. A 40-year-old-male status post-transcervical gunshot wound. Sagittal (A) neck CTA image demonstrates a focus of active bleeding (arrow) arising from the external carotid artery. Axial image (B) also reveals a right vertebral artery occlusion (arrow) and comminuted fractures of the C2 vertebrae (triangle). The ECA injury was successfully treated with coil embolization (not shown).

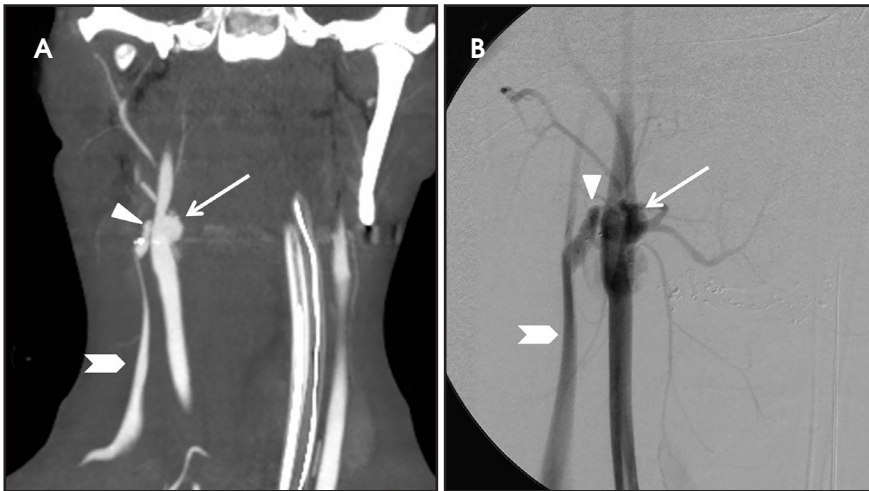


FIGURE 9. An 18-year-old man status post-transcervical gunshot wound. Coronal neck CTA image (A) demonstrates a pseudoaneurysm arising from the carotid bifurcation (arrow), a fistulous connection (triangle) and “arterialization” (arrow head) of the internal jugular vein, compatible with a traumatic arterio-venous fistula. Digital subtraction image (B) confirms the diagnosis.

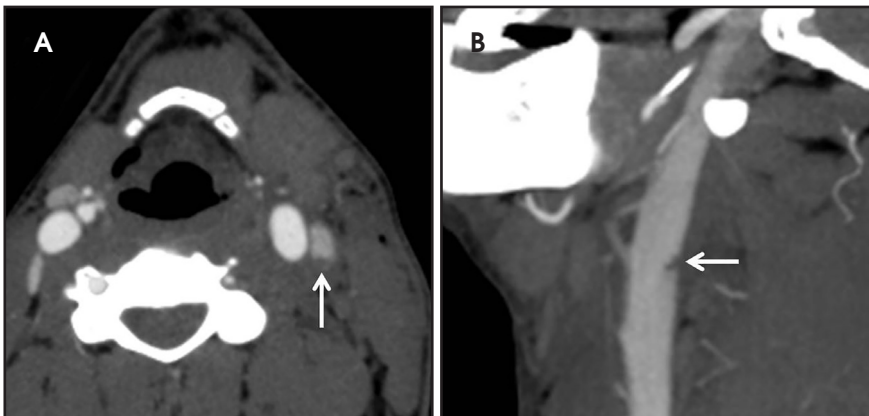


FIGURE 10. A 31-year-old man, status post-zone II stab wound to the left side of the neck. Axial (A) and sagittal (B) neck CTA images demonstrate a focal filling defect (arrows) along the posterior wall of the left internal jugular vein, compatible with intimal injury and focal intraluminal thrombus

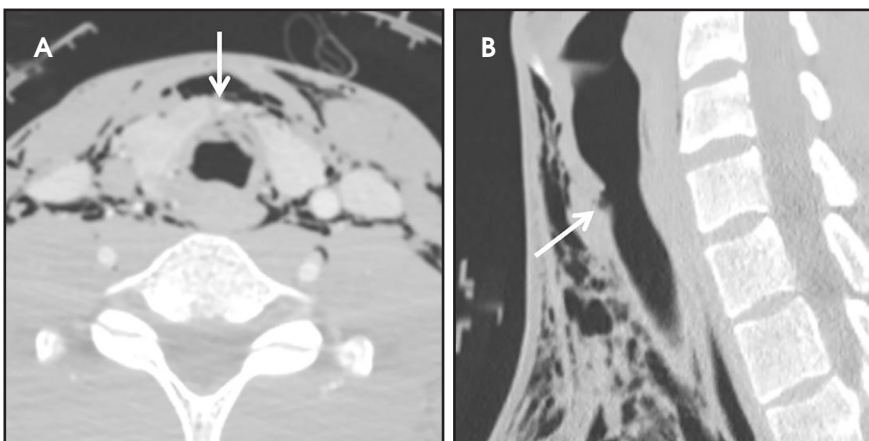


FIGURE 12. A 24-year-old man with tracheal laceration following a dog attack. Axial (A) and midline sagittal (B) images demonstrate a focal anterior tracheal defect (arrow). There is extensive cervical emphysema



Figure 11. A 19-year-old man with multiple neck stab wounds. Axial neck CTA image (A) demonstrates a collection of prevertebral soft tissue gas (arrows). Lateral image from a water-soluble esophagram (B) demonstrates a full thickness esophageal injury with focal contrast leak (arrow), marked prevertebral soft tissue swelling (double headed arrow), and prevertebral soft tissue gas (*).

Conclusion

CT angiography is the current accepted standard for the evaluation of patients with PNI who do not have indications for immediate surgical exploration. The modality is quick, accurate, and reliable, and it can be used to significantly reduce the number of non-therapeutic neck explorations. Further management decisions can be based on CTA findings and used to rapidly triage patients to either surgical intervention or observation.

REFERENCES

1. Biffi WL, Moore EE, Rehse DH, et al. Selective management of penetrating neck trauma based on cervical level of injury. *Am J Surg.* 1997;174(6):678–682.
2. MacFarlane C, Benn CA. Penetrating neck injury: A review. *Trauma.* 2002;4(2):79–90.
3. Miller RH, Duplechain JK. Penetrating wounds of the neck. *Otolaryngol Clin North Am.* 1991;24(1):15–29.
4. Múnera F, Soto JA, Palacio D, et al. Diagnosis of arterial injuries caused by penetrating trauma to the neck: comparison of helical CT angiography and conventional angiography. *Radiology.* 2000;216(2):356–362.
5. Steenburg SD, Sliker CW, Shanmuganathan K, et al. Imaging of penetrating neck injuries. *RadioGraphics.* 2010;30:869–886.
6. Burgess CA, Dale OT, Almeyda R, et al. An evidence based review of the assessment and management of penetrating neck trauma. *Clin Otolaryngol.* 2012;37:44–52.
7. Gracias VH, Reilly PM, Philpott J, et al. Computed tomography in the evaluation of penetrating neck trauma: A preliminary study. *Arch Surg.* 2001;136(11):1231–1235.
8. Ramadan F, Rutledge R, Oller D, et al. Carotid artery trauma: A review of contemporary trauma center experiences. *J Vasc Surg.* 1995;21(1):46–55; discussion 55–56.
9. Sperry JL, Moore EE, Coimbra R, et al. Western Trauma Association critical decisions in trauma: Penetrating neck trauma. *J Trauma Acute Care Surg.* 2013;75(6):936–940.
10. Inaba K, Branco BC, Menaker J, et al. Evaluation of multidetector computed tomography for penetrating neck injury: A prospective multicenter study. *J Trauma.* 2012;72(3):576–584.
11. Bishara RA, Pasch AR, Douglas DD, et al. The necessity of mandatory exploration of penetrating zone II neck injuries. *Surgery.* 1986;100(4):655–660.
12. Elerding SC, Manart FD, Moore EE. A reappraisal of penetrating neck injury management. *J Trauma.* 1980;20(8):695–697.
13. Bell RB, Osborn T, Dierks EJ, et al. Management of penetrating neck injuries: A new paradigm for civilian trauma. *J Oral Maxillofac Surg.* 2007;65(4):691–705.
14. Azuaje RE, Jacobson LE, Glover J, et al. Reliability of physical examination as a predictor of vascular injury after penetrating neck trauma. *Am Surg.* 2003;69(9):804–807.
15. Demetriades D, Theodorou D, Cornwell E, et al. Evaluation of penetrating injuries of the neck: Prospective study of 223 patients. *World J Surg.* 1997;21(1):41–47; discussion 47–48.
16. Mazolewski PJ, Curry JD, Browder T, et al. Computed tomographic scan can be used for surgical decision making in zone II penetrating neck injuries. *J Trauma.* 2001;51(2):315–319.
17. Múnera F, Soto JA, Palacio DM, et al. Penetrating neck injuries: Helical CT angiography for initial evaluation. *Radiology.* 2002;224(2):366–372.
18. Nuñez DB Jr, Torres-León M, Múnera F. Vascular injuries of the neck and thoracic inlet: Helical CT–angiographic correlation. *RadioGraphics.* 2004;24(4):1087–1098; discussion 1099–1100.
19. Appfelstaedt JP, Müller R. Results of mandatory exploration for penetrating neck trauma. *World J Surg.* 1994;18(6):917–919; discussion 920.
20. Asensio JA, Valenziano CP, Falcone RE, et al. Management of penetrating neck injuries: The controversy surrounding zone II injuries. *Surg Clin North Am.* 1991;71(2):267–296.
21. Fry WR, Dort JA, Smith RS, et al. Duplex scanning replaces arteriography and operative exploration in the diagnosis of potential cervical vascular injury. *Am J Surg.* 1994;168(6):693–695; discussion 695–696.
22. Meyer JP, Barrett JA, Schuler JJ, et al. Mandatory vs selective exploration for penetrating neck trauma: a prospective assessment. *Arch Surg.* 1987;122(5):592–597.
23. Múnera F, Cohn S, Rivas LA. Penetrating injuries of the neck: Use of helical computed tomographic angiography. *J Trauma.* 2005;58(2):413–418.
24. Múnera F, Soto JA, Nuñez D. Penetrating injuries of the neck and the increasing role of CTA. *Emerg Radiol.* 2004;10(6):303–309.
25. Inaba K, Muñera F, McKenney M, et al. Prospective evaluation of screening multislice helical computed tomographic angiography in the initial evaluation of penetrating neck injuries. *J Trauma.* 2006;61(1):144–149.
26. Osborn TM, Bell RB, Qaisi W, et al. Computed tomographic angiography as an aid to clinical decision making in the selective management of penetrating injuries to the neck: A reduction in the need for operative exploration. *J Trauma.* 2008;64(6):1466–1471.
27. Woo K, Magner DP, Wilson MT, et al. CT angiography in penetrating neck trauma reduces the need for operative neck exploration. *Am Surg.* 2005;71(9):754–758.
28. LeBlang SD, Nuñez DB, Rivas LA, et al. Helical computed tomographic angiography in penetrating neck trauma. *Emerg Radiol.* 1997;4(4):200–206.
29. Shiroff AM, Gale SC, Martin ND, et al. Penetrating neck trauma: A review of management strategies and discussion of the “no zone” approach. *Am Surg.* 2013;79(1):23–29.
30. Demetriades D, Skalkides J, Sofianos C, et al. Carotid artery injuries: Experience with 124 cases. *J Trauma.* 1989;29(1):91–94.
31. Kendall JL, Anglin D, Demetriades D. Penetrating neck trauma. *Emerg Med Clin North Am.* 1998;16(1):85–105.
32. McIntyre WB, Ballard JL. Cervicothoracic vascular injuries. *Semin Vasc Surg.* 1998;11(4):232–242.
33. Mirvis SE, Shanmuganathan K. *Imaging in trauma and critical care.* Philadelphia, Pa: Saunders; 2003.
34. Kuehne JP, Weaver FA, Papanicolaou G, et al. Penetrating trauma of the internal carotid artery. *Arch Surg.* 1996;131(9):942–947; discussion 947–948.
35. Parikh AA, Luchette FA, Valente JF, et al. Blunt carotid artery injuries. *J Am Coll Surg.* 1997;185(1):80–86.
36. Gonzalez RP, Falimirski M, Holevar MR, et al. Penetrating zone II neck injury: Does dynamic computed tomographic scan contribute to the diagnostic sensitivity of physical examination for surgically significant injury? A prospective blinded study. *J Trauma.* 2003;54(1):61–64; discussion 64–65.
37. Nel L, Jones LW, Hardcastle TC. Imaging the oesophagus after penetrating cervical trauma using water-soluble contrast alone: Simple, cost-effective and accurate. *Emerg Med J.* 2009;26(2):106–108.
38. Demetriades D, Velmahos GG, Asensio JA. Cervical pharyngo-oesophageal and laryngotracheal injuries. *World J Surg.* 2001;25(8):1044–1048.
39. McConnell DB, Trunkley DD. Management of penetrating trauma to the neck. *Adv Surg.* 1994;27:97–127.
40. Symbas PN, Hatcher CR Jr, Vlasis SE. Esophageal gunshot injuries. *Ann Surg.* 1980;191(6):703–707.
41. Kuttnerberger JJ, Hardt N, Schlegel C. Diagnosis and initial management of laryngotracheal injuries associated with facial fractures. *J Craniomaxillofac Surg.* 2004;32(2):80–84.
42. Verschuere DS, Bell RB, Bagheri SC, et al. Management of laryngo-tracheal injuries associated with craniomaxillofacial trauma. *J Oral Maxillofac Surg.* 2006;64(2):203–214.
43. Cheadle W, Richardson JD. Options in management of trauma to the esophagus. *Surg Gynecol Obstet.* 1982;155(3):380–384.
44. Srinivasan R, Haywood T, Horwitz B, et al. Role of flexible endoscopy in the evaluation of possible esophageal trauma after penetrating injuries. *Am J Gastroenterol.* 2000;95(7):1725–1729.
45. Hanpeter DE, Demetriades D, Asensio JA, et al. Helical computed tomographic scan in the evaluation of mediastinal gunshot wounds. *J Trauma.* 2000;49(4):689–694; discussion 694–695.
46. Mandavia DP, Qualls S, Rokos I. Emergency airway management in penetrating neck injury. *Ann Emerg Med.* 2000;35(3):221–225.
47. Stanley RB Jr. Value of computed tomography in management of acute laryngeal injury. *J Trauma.* 1984;24(4):359–362.
48. DeVivo MJ, Rutt RD, Black KJ, et al. Trends in spinal cord injury demographics and treatment outcomes between 1973 and 1986. *Arch Phys Med Rehabil.* 1992;73(5):424–430.
49. Nobunaga AI, Go BK, Karunas RB. Recent demographic and injury trends in people served by the Model Spinal Cord Injury Care Systems. *Arch Phys Med Rehabil.* 1999;80(11):1372–1382.
50. Sekhon LH, Fehlings MG. Epidemiology, demographics, and pathophysiology of acute spinal cord injury. *Spine.* 2001;26(24 suppl):S2–S12.
51. Thompson EC, Porter JM, Fernandez LG. Penetrating neck trauma: An overview of management. *J Oral Maxillofac Surg.* 2002;60(8):918–923.
52. LeBlang SD, Nuñez DB Jr. Helical CT of cervical spine and soft tissue injuries of the neck. *Radiol Clin North Am.* 1999;37(3):515–532.