



Marion County
Medical Multi-Agency Coordination Center
DAILY SITUATIONAL AWARENESS BRIEF
June 1, 2011



**COMMON OPERATING
PICTURE**

Air Quality Index – **45** (good)
Today's Forecast – Moderate

Pollen Count – **8.4** (medium-high)

UV Index – **10** (very high)

Radiation Level - Beta Gross
Count Rate (CPM): **76**
(within normal range)



Weather

Today: A 20 percent chance of showers and thunderstorms before 8am. Sunny, with a high near 86. Northwest wind between 6 and 8 mph.

Tonight: Mostly clear, with a low around 61. North Northwest wind between 3 and 7 mph.

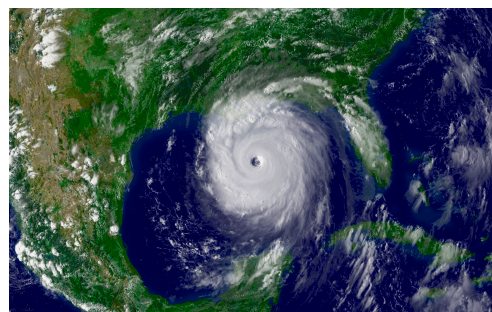
**Hazardous Weather
is Not Expected Today.**

NATIONAL TERRORISM ADVISORY SYSTEM - No Active Alerts

THREAT ANALYSIS

The Atlantic hurricane season begins today. NOAA is predicting the following ranges this year:

- 12 to 18 named storms (winds of 39 mph or higher), of which:
- 6 to 10 could become hurricanes (winds of 74 mph or higher), including:
- 3 to 6 major hurricanes (Category 3, 4 or 5; winds of 111 mph or higher)



Each of these ranges has a 70 percent likelihood, and indicate that activity will exceed the seasonal average of 11 named storms, six hurricanes and two major hurricanes. While people think that hurricanes are of no concern to Indiana, the reality is that they can have a local impact on the healthcare system, especially when a significant hurricane makes landfall in the United States, as Indiana may receive patients and evacuees from the affected area(s). Additionally, remnant hurricane systems have impacted Indiana with severe weather in the past as they move across the state.

ACTION STEPS

Let us not forget the lessons of Hurricane Katrina

- [1] Explain to staff that the Atlantic hurricane season runs from June 1st through November 30th.
[2] Discuss the various ways that hurricanes can impact the local area. Some examples include: staff being concerned about family members in the landfall area, influx of patients and/or evacuees, disruption of supplies due to damage to ports and increased fuel cost and/or shortages.

INDY EVENTS

The following events have an expected attendance of at least 500 people. Mass gatherings are of concern to the healthcare sector for multiple reasons, including being potential mass casualty incidents as the result of natural or man-made hazards, and also provide venues for transmission of communicable diseases.

- [1] Indianapolis Charity Horse Show (Indiana State Fairgrounds)
[2] In Concert with Nature at Eagle Creek Marina: Hazelwood String Band (Eagle Creek Park & Marina)
[3] Wild Wednesday Street Legals and Slick Tire Test and Tune (Lucas Oil Raceway Park)
[4] USAC (Indianapolis Speedrome)
[5] Scranton/Wilkes-Barre Yankees vs. Indianapolis Indians (Victory Field)

MESH does not assume any liability for the content, materials, information, and opinions provided within this communication. Further, MESH disclaims any liability resulting from use of any content within this communication. Information contained in this communication is provided "as is," with all faults. Neither MESH, nor any person associated with MESH, makes any warranty or representation with respect to the quality, accuracy, or availability of this information.

MESH serves as the designated Medical Multi-Agency Coordination Center for Marion County, Indiana. The MESH Intelligence Program is a joint-effort between the City of Indianapolis, Division of Homeland Security, the Marion County Public Health Department and the Indiana Department of Homeland Security designed to provide real-time information and support to the healthcare sector in the Indianapolis area. Jim Floyd, Director of Healthcare Intelligence, is available to assist with questions at: Office phone: 317.630.7362, Cell phone: 317.397.3652, Pager: 317.310.6762, Email: jfloyd@meshcoalition.org